

G. F. Handel
Sonata No. 1 in A Minor for Flute and Continuo

Adagio

6 6 # 6 #

10

5 6 # 5 6 5' 4 # 6 # 6 6

19

6 # # # 6 7 7 # # # 6 5 4

28

5 4 4 2 6 4 # 6 # #

36

5. 4+ 2 4 5 # 6 6 6 6 5 4

25

30

Adagio

Adagio

6

10

13

16

19

22

Allegro

Allegro

9

6 6 4+2 6 4+2 6 7

17

3+ 4+2 6 # 6 # 6 # 6 #

24

6 6 5 6 7 6 4+

32

6 5 6 4+ 7 4 # 6 4+ 6 6 6

40

4+ 6 4+ 6 5 6 4 #

Three Sonatas
for Flute and Basso continuo
Handel

I

Adagio



10



18



27



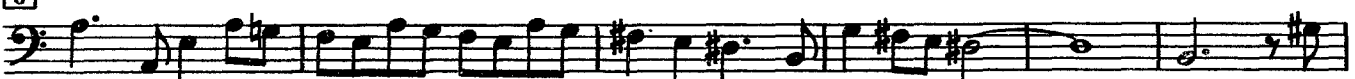
36



Allegro



6



12



16



21



27

31

Adagio

6

10

18

18

21

Allegro

9

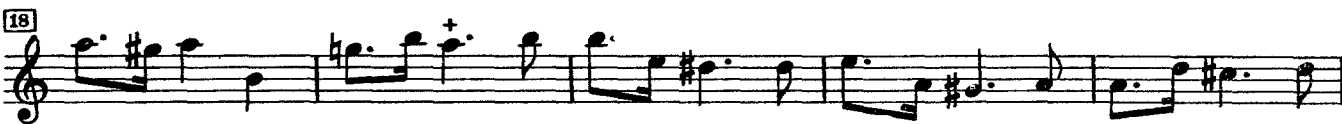
19

28

38

G. F. Handel
Sonata No. 1 in A Minor for Flute & Continuo
Flute

Adagio



Allegro

Musical score for the Allegro section, measures 1-30. The score is written on a single treble clef staff in 2/4 time. It begins with a treble clef and a common time signature. The key signature has one sharp (F#). The tempo is marked 'Allegro'. The score consists of seven lines of music. Measure numbers 5, 10, 15, 19, 24, and 29 are indicated in small boxes on the left. The music features a mix of eighth and sixteenth notes, often beamed together, with some slurs and accents. A repeat sign with first and second endings is present at measure 15. A double bar line with repeat dots is at the end of measure 30.

Adagio

Musical score for the Adagio section, measures 1-11. The score is written on a single treble clef staff in 2/4 time. It begins with a treble clef and a common time signature. The key signature has one sharp (F#). The tempo is marked 'Adagio'. The score consists of three lines of music. Measure numbers 4, 8, and 11 are indicated in small boxes on the left. The music features a mix of eighth and sixteenth notes, often beamed together, with some slurs and accents. A double bar line with repeat dots is at the end of measure 11.

Musical notation for measures 15, 18, and 21. Measure 15 includes a small inset showing a detail of a sixteenth-note triplet. Measures 18 and 21 feature various rhythmic patterns and accidentals.

Allegro

Musical notation for measures 7, 12, 17, 23, 29, 34, 39, and 43. The piece is in 3/4 time. Measures 17, 34, 39, and 43 contain multiple triplet markings. Measure 23 includes a repeat sign. The notation is in treble clef with a key signature of one sharp (F#).